

90°53'W 38°34'N 90°52'W 90°51'W

Notes

St. Charles County

Franklin County

Washington Gage = 4.3 at time of collection 17 September 2020

Gage_L

Source: Esri, DigitalGlobe, GeoEye, Earthstar Geographics, CNES/Airbus DS, USDA, USGS, AeroGRID, IGN, and the GIS User Community



Disclaimer: The U.S. Army Corps of Engineers... This map is for informational purposes only and does not constitute a warranty of any kind. The Corps of Engineers is not responsible for any errors or omissions in this map or for any consequences arising from its use.

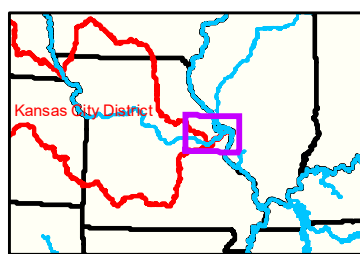
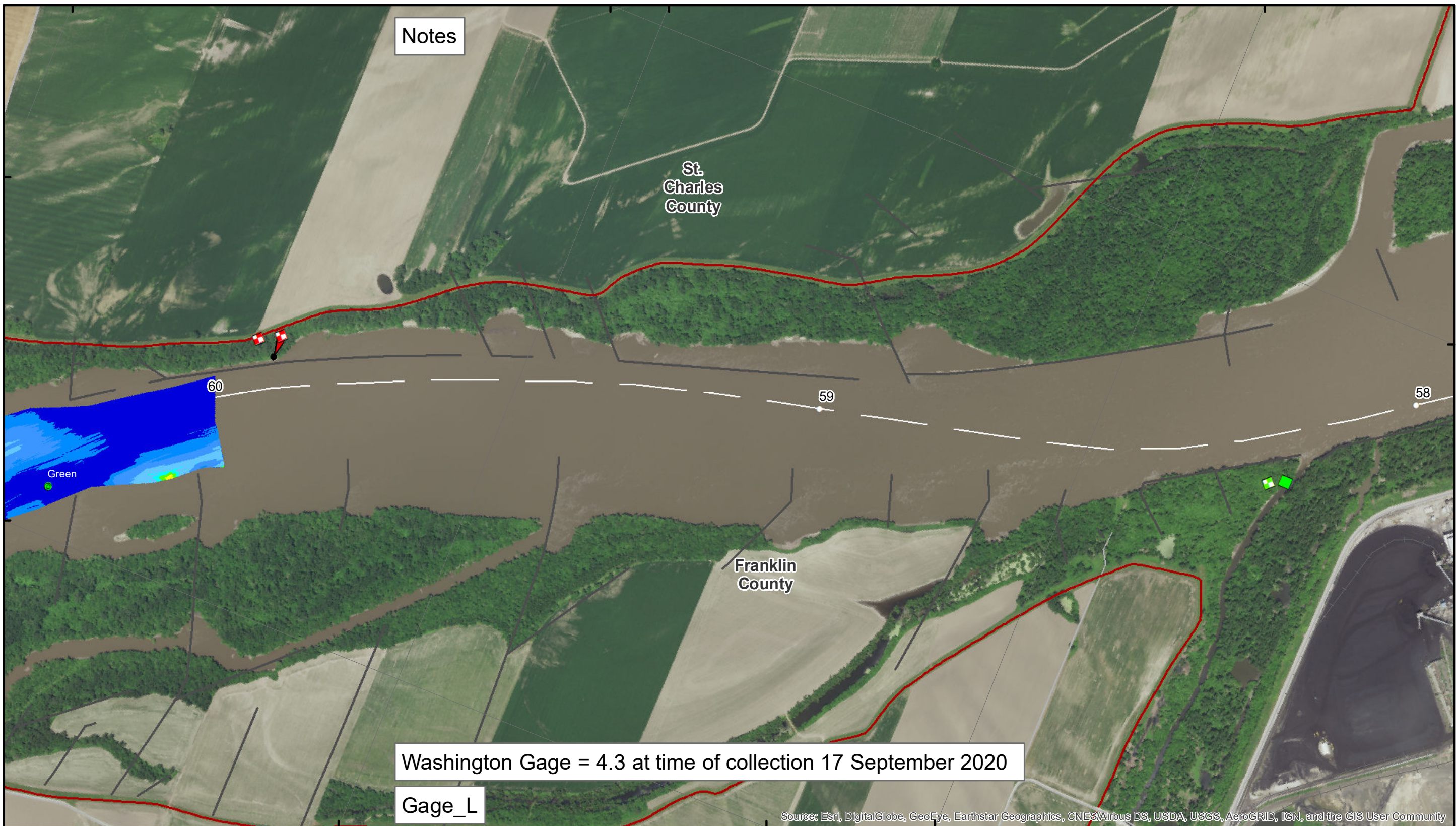
KANSAS CITY DISTRICT MISSOURI RIVER AREA OFFICE	
Submitted By:	MRAO
Reviewed By:	MRAO
Checked By:	MRAO

Survey Information

MO_01_LMR
 MO_01_LMR_20200917_CS_60_0_61_0_SORT
 17 September 2020

Sheet Number
 27 of 46

90°53'W 38°33'N



LEGEND

< 8	< 8 ft	Green Passing	Green
8 - 9	8 - 9 ft	Red Passing	Red
9 - 9.5	9 - 10 ft	Green Crossing	Green CAN
9.5 - 10	10 - 12 ft	Red Crossing	Red NUN
10 - 12	River Mile		
12 - 14	Sailing Line		
14 - 16	BSNP Structure		
> 16	Levee		

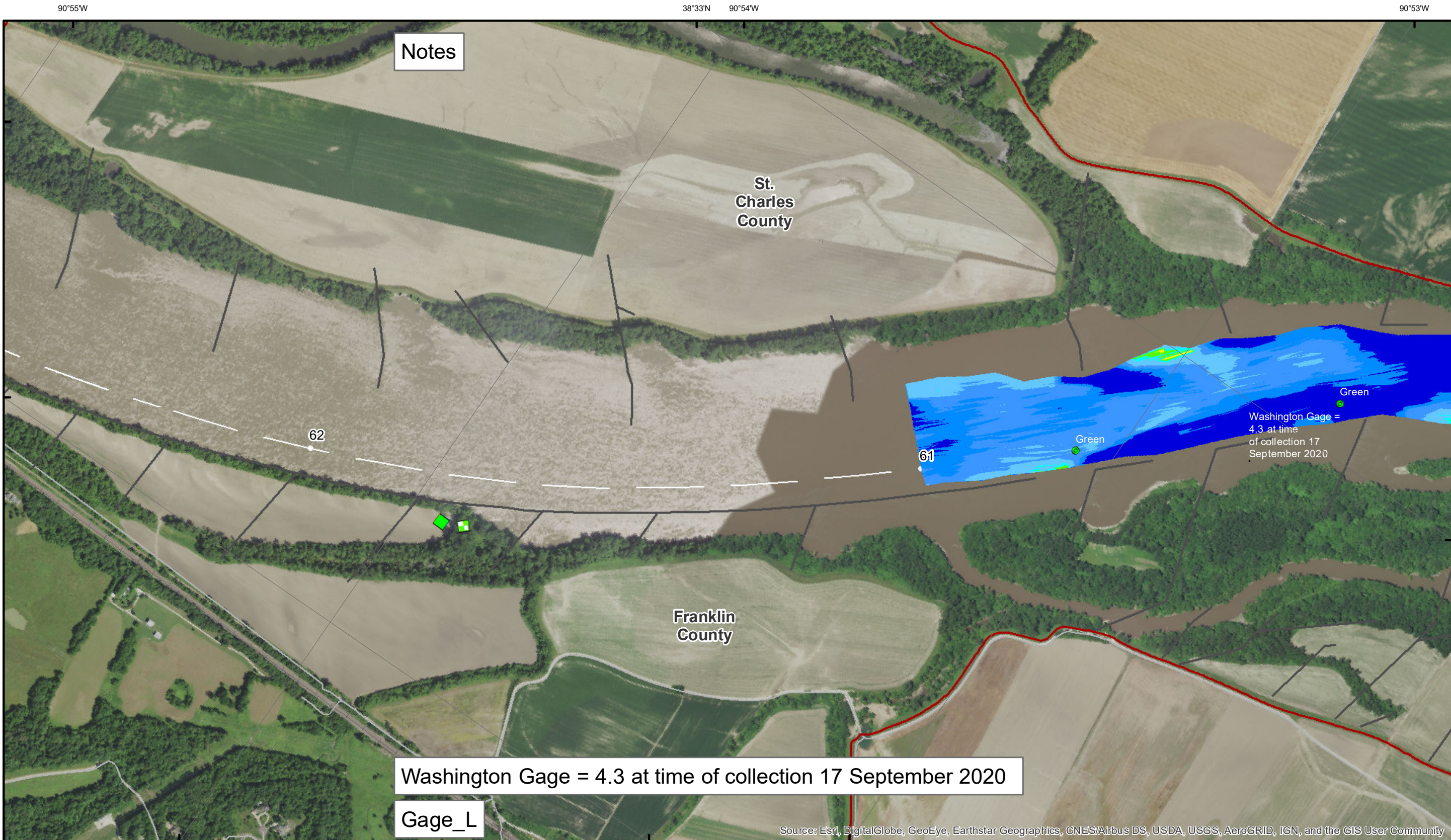
Buoy

Green CAN
 Red NUN

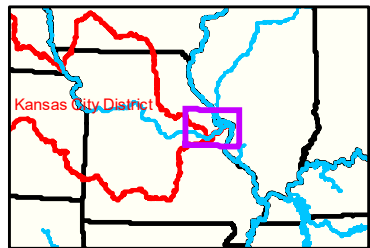
Scale: 0 312.5 625 937.5 1,250 2,500 Feet

NOTES:
 Horizontal Coordinate System: World Geodetic System of 1984 (WGS84), projected to the Universal Transverse Mercator (UTM) Zone 15 North. Distance units in U.S. Survey Feet.
 Vertical Datum: Soundings are shown in feet and indicated depths are referenced to water surface at time of collection.
 The information depicted on this map represents the results of a survey conducted on the date indicated and can only be considered to represent the general condition existing at that time.
 The location of navigation aids are based on and provided by the U.S. Coast Guard.





Source: Esri, DigitalGlobe, GeoEye, Earthstar Geographics, CNES/Airbus DS, USDA, USGS, AeroGRID, IGN, and the GIS User Community



LEGEND

	< 8		< 8 ft		Green Passing		Green		Green CAN
	8 - 9		8 - 9 ft		Red Passing		Red		Red NUN
	9 - 9.5		9 - 10 ft		Green Crossing		Red Crossing		
	9.5 - 10		10 - 12 ft						
	10 - 12		River Mile						
	12 - 14		Sailing Line						
	14 - 16		BSNP Structure						
	> 16		Levee						

NOTES:
Horizontal Coordinate System: World Geodetic System of 1984 (WGS84), projected to the Universal Transverse Mercator (UTM) Zone 15 North. Distance units in U.S. Survey Feet.
Vertical Datum: Soundings are shown in feet and indicated depths are referenced to water surface at time of collection.
The information depicted on this map represents the results of a survey conducted on the date indicated and can only be considered to represent the general condition existing at that time.
The location of navigation aids are based on and provided by the U.S. Coast Guard.



DISCLAIMER: The U.S. Army Corps of Engineers (USACE) provides this information as a service to the public. It is not intended to be used for any purpose other than that for which it was intended. The USACE makes no warranty, express or implied, regarding the accuracy, reliability, or completeness of the information. The USACE is not responsible for any errors or omissions in this information. The USACE is not liable for any damages, including consequential damages, arising from the use of this information. The USACE is not responsible for any actions taken based on this information. The USACE is not responsible for any actions taken based on this information.

KANSAS CITY DISTRICT MISSOURI RIVER AREA OFFICE	
Submitted By:	MRAO
Reviewed By:	MRAO
Checked By:	MRAO
Approved:	

Survey Information

MO_01_LMR
MO_01_LMR_20200917_CS_60_0_61_0_SORT
17 September 2020

Sheet Number
28 of 46